

# Agriculture – Floriculture

**Chairperson: Jackie Alexander Co-Chairperson: Jeanette Billingsley & Marilyn Rutan**

**Information: Jackie Alexander 760-240-3991**

**Entry Information:**  
Open to San Bernardino County & Adjacent county residents

**Entries Close: Fri. May 7th, 4pm**  
 Exhibits Received: Fri. May 14th, 3pm – 5pm  
 Exhibits Released: Mon. May 24<sup>th</sup>, 1pm – 4pm  
 Entry Fee: \$1.50 per entry per class per show for Agriculture

**~American System of Judging~**

<u>Premiums offered per class in this Department</u>		
1 <sup>st</sup>	2 <sup>nd</sup>	3 <sup>rd</sup>
\$3.00	\$2.00	\$1.00

**Agriculture / Horticulture**  
**Department Guidelines**

1. All General Information, Local and State Rules apply to the Agriculture/Floriculture Department.
2. The exhibits listed on the entry form must be home grown.
3. Produce variety must be adequately and correctly labeled. Name variety on entry form.
4. The quality and condition desired in agricultural product exhibits is based on appearance at the time of harvest and the best of what is available for the time of year.
5. See Section 42513 and 42515 of the California Agricultural Code, for product definitions, to be considered for premium awards. Section 42513: "Mature means having reached the stage of ripeness which will insure the completion of the ripening process to a degree which will insure palatability after the removal of the products from tree, plant or vine." Section 42515: "Overripe means having an advanced state of maturity which causes the product to be undesirable for human consumption."
6. Unless otherwise stated, the type of vegetable desired for exhibit will be uniform rather than overgrown.
7. Monstrosities will not be considered for premium awards.

**Division 30 Fruit & Vegetables**

~ Plate Display ~

Classes:

1. Peppers, any variety (4) – specify
2. Tomatoes, any variety (4) – specify
3. Any other fruit/vegetable (4) - specify

**Division 31 Leafy Stem Vegetables**

~ Plate Display ~

Classes:

1. Any leafy stem vegetable (5)-specify

**Division 32 Root, Bulb & Tuber Vegetables**

~ Plate Display ~

Classes:

1. Garlic, any variety (4) - specify
2. Onions, any variety (4) - specify
3. Any other root, bulb or tuber (4)-specify

**Division 33 Vine Crop Vegetables**

~ Plate Display ~

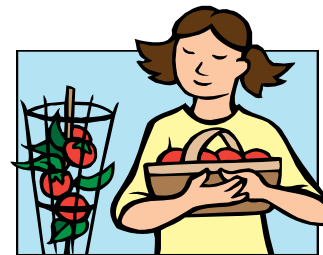
Classes:

1. Gourds – Dried
2. Gourds -- Fresh
3. Any other vine crops (3) – specify

**Division 34 Herbs** ~ Plate Display ~

Classes:

1. Herbs - specify Variety



**How does your garden grow?**

# Agriculture – Floriculture

Chairperson: Jackie Alexander Co-Chairperson: Jeanette Billingsley & Marilyn Rutan

Information: Jackie Alexander 760-240-3991

## **Jackie and Rod Alexander**

Apple Valley, CA 92308

Will present  
**25 lbs. of chicken scratch to the  
High Sweepstakes Winner  
of the *Egg Division***



### **Division 35 White Chicken Eggs**

~ Judged on uniform size, color & weight – 1 dozen

#### **Classes:**

1. Extra Large – 2 ½ oz each/ 30 oz per dozen
2. Large – 2 ¼ oz each or 27 oz per dozen
3. Medium – 2 oz each or 24 oz per dozen
4. Small – 1 ½ oz each or 21 oz per dozen

### **Division 36 Brown Chicken Eggs**

~ Judged on uniform size, color & weight – 1 dozen

#### **Classes:**

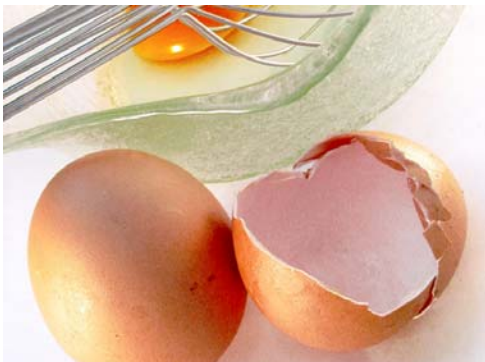
1. Extra Large – 2 ½ oz each/ 30 oz per dozen
2. Large – 2 ¼ oz each or 27 oz per dozen
3. Medium – 2 oz each or 24 oz per dozen
4. Small – 1 ½ oz each or 21 oz per dozen

### **Division 37 Misc. Chicken Eggs**

~ Judged on uniform size, color & weight – 1 dozen

#### **Classes:**

1. Araucana – 1 dozen
2. Any others – 1 dozen



### **Largest Egg Guidelines**

- o A complete entry is the egg and picture of the bird that laid the egg.
- o Please list the type of bird, or beast, she is.
- o All eggs will be judged on weight 1<sup>st</sup>, then appearance. No Cracked eggs will be allowed.

### **Division 38 Largest Egg**

#### **Classes:**

1. Largest Chicken Egg

